

## ENVIRONMENTAL PRODUCT DECLARATION

# LASER PRINTER MX912DXE

According to ISO 14025



High-volume output, long-life components, solid security and advanced finishing make the Lexmark MX910 Series the ultimate SRA3 capability multifunction product from Lexmark. As a complete line of SRA3 monochrome multifunction products by Lexmark, the MX910 Series brings speed, connectivity, security, sustainable design, a user-centric interface and advanced finishing to your enterprise—supported by the complete Lexmark user experience, service options and solution library. The MX912 takes only seconds to produce a first page, then prints up to 65 pages per minute. The fast printing mechanism is backed by a powerful 800 MHz dual-core processor and up to three gigabytes of memory to ensure swift output and satisfied users.



Lexmark hardware, software and services combine to help our customers securely and efficiently capture, manage and print information. Our solutions connect unstructured printed and digital information to the applications, processes and people that need it most, improving customer service, driving financial performance and ensuring flexibility for the future.

As part of the commitment to our customers, Lexmark is undertaking the task of performing Life Cycle Analysis on the set of products announced after October 2012. The results of the LCA analysis will assist Lexmark in reducing the environmental impact of the hardware, software and services offered to our customers.



# ENVIRONMENTAL PRODUCT DECLARATION



Laser Printer MX912DXE  
Printers and multi-functional printing units

According to ISO 14025

This declaration is an environmental product declaration (EPD) in accordance with ISO 14025. EPDs rely on Life Cycle Assessment (LCA) to provide information on a number of environmental impacts of products over their life cycle. Exclusions: EPDs do not indicate that any environmental or social performance benchmarks are met, and there may be impacts that they do not encompass. LCAs do not typically address the site-specific environmental impacts of raw material extraction, nor are they meant to assess human



health toxicity. EPDs can complement but cannot replace tools and certifications that are designed to address these impacts and/or set performance thresholds – e.g. Type 1 certifications, health assessments and declarations, environmental impact assessments, etc. Accuracy of Results: EPDs regularly rely on estimations of impacts, and the level of accuracy in estimation of effect differs for any particular product line and reported impact. Comparability: EPDs are not comparative assertions and are either not comparable or have limited comparability when they cover different life cycle stages, are based on different product category rules or are missing relevant environmental impacts. EPDs from different programs may not be comparable.

PROGRAM OPERATOR	UL Environment
DECLARATION HOLDER	Lexmark
DECLARATION NUMBER	4787236126.104.1
DECLARED PRODUCT	Laser Printer MX912DXE
REFERENCE PCR	ULE (2012) Product Category Rules for preparing an environmental product declaration (EPD) for printers and multi-function printing units (v1.0). UL Environment
DATE OF ISSUE	March 30, 2015
PERIOD OF VALIDITY	5 Years
CONTENTS OF THE DECLARATION	Product definition and information about building physics Information about basic material and the material's origin Description of the product's manufacture Indication of product processing Information about the in-use conditions Life cycle assessment results Testing results and verifications
The PCR review was conducted by:	UL Environment Review Panel Lise Laurin (Chairperson) 31 Leach Road; Kittery, Maine 03904; lise@earthshift.com
This declaration was independently verified in accordance with ISO 14025 by Underwriters Laboratories <input type="checkbox"/> INTERNAL <input checked="" type="checkbox"/> EXTERNAL	 Wade Stout, UL Environment
This life cycle assessment was independently verified in accordance with ISO 14044 and the reference PCR by:	 Thomas Gloria, Indust. Ecology Consultants

# ENVIRONMENTAL PRODUCT DECLARATION



**Lexmark**<sup>™</sup>

Laser Printer MX912DXE

Printers and multi-functional printing units

According to ISO 14025

## Product Description

---

<b>Product Type</b>	Mono Laser Printer
<b>Printer Model</b>	MX912DXE
<b>Maximum Print Speed</b>	65 pages per minute
<b>Intended use</b>	primarily office
<b>Range of applications</b>	print images or text in mono onto paper or paper-like media
<b>Product Lifetime</b>	5 years
<b>Introduction Date</b>	06/17/2014
<b>Product Specifications</b>	<a href="http://www.lexmark.com/en_US/products/series/printer-and-multifunction/finder.shtml">http://www.lexmark.com/en_US/products/series/printer-and-multifunction/finder.shtml</a>
<b>Functional Unit</b>	The functional unit has been defined as a 1,000 page simplex job in accordance with the Energy Star Typical Energy Consumption test procedure and the reference Product Category Rule (PCR).
<b>Scope of Validity / Applicability</b>	The EPD is representative for the printer model MX912DXE sold as a stand-alone unit. This EPD and the reference PCR are applicable for printer sale and use in the North American market. Lexmark cannot guarantee that comparisons with EPDs of competitive products will be valid.
<b>Product Characterization</b>	A solutions-capable, network-ready mono laser printer with standard 2-sided printing, an 800 MHz dual-core processor, and up to 3GB of standard memory that prints up to 65 ppm black. The printer fuses to a medium (such as paper) to create hard copy images from electronic or hard copy originals. The printer product delivered to the customer consists of the printer, a power cord, printed setup instructions, a CD/DVD that includes the User Guide and Printer Drivers and an initial set of product supplies. The printer is delivered in packaging that can be recycled locally and is not needed for product operation. Product supplies include toner cartridges, imaging kits and the fusing mechanism. The power supply is internal to the product and the imaging kit and fusing mechanism are installed at the factory. Only the toner cartridges must be installed by the customer. The printer can be setup by the customer without

# ENVIRONMENTAL PRODUCT DECLARATION



Laser Printer MX912DXE  
Printers and multi-functional printing units

According to ISO 14025

---

	outside assistance.
--	---------------------

# ENVIRONMENTAL PRODUCT DECLARATION



Laser Printer MX912DXE  
Printers and multi-functional printing units

According to ISO 14025

## System Boundary

The study considers all phases of the life cycle, as shown below.

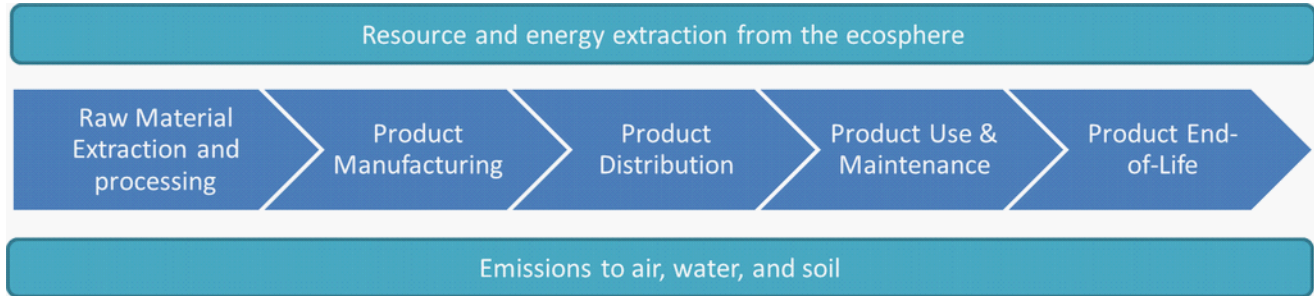


Figure 1: System Boundaries

## Declaration of Basic Materials

The printer consist of mechanical, electromechanical, and electronic components. Its material composition can be described using the basic material fractions given below. Please note that the category 'Electronics' also includes all wiring.

Material	Mass (kg)
<b>Plastics (recyclable)</b>	29.5
<b>Plastics (non-recyclable)</b>	7.03
<b>Ferrous Metals</b>	62
<b>Aluminum</b>	0.726
<b>Copper</b>	0.178
<b>Glass</b>	2.24
<b>Electronics</b>	12.8
<b>Other Materials</b>	0.259

Table 1: Basic Material Declaration

## Product Supply Chain

The printer is manufactured and assembled in Southeast China. The cartridges for the North American market are manufactured and assembled in Juarez, Mexico.

# ENVIRONMENTAL PRODUCT DECLARATION



Laser Printer MX912DXE  
Printers and multi-functional printing units

According to ISO 14025

## Life Cycle Assessment Results

The following sections describe the printer's potential environmental impacts over the full printer life cycle. These represent the typical impacts for an average system sold in the North American market. All impacts are presented per functional unit of printing 1,000 images of the reference standard.

### Manufacturing Material and Resources Inventory

Table 2 displays the use of material resources (kg) and of non-renewable as well as renewable primary energy demand necessary for printer manufacturing, but excludes other life cycle stages of the printer (cradle-to-gate). Likewise, material and energy consumption associated with printer packaging, cartridges, and paper is excluded here.

Use of Material Resources [kg]	
Non-Renewable	4.37E003
Renewable (excl. water)	1.19E004
Water	8.77E005
Use of Non-Renewable Primary Energy [MJ]	
Crude Oil	2.81E003
Hard Coal	7.05E003
Lignite	419
Natural Gas	3.48E003
Uranium	796
Use of Renewable Primary Energy [MJ]	
Biomass	2.09
Geothermal	18.4
Solar	401
Wind	214
Hydropower	615

Table 2: Use of Material and Energy Resources for Printer Manufacturing (Cradle-to-Gate)

### Energy Consumption During Utilization

Based on the EnergyStar Typical Energy Consumption (TEC) test methodology, the printer is expected to have the following power consumption for an assumed average job load.

	Per 1,000 page	Per product lifetime
Energy Consumption During Utilization [kWh]	0.464	1.27E003

# ENVIRONMENTAL PRODUCT DECLARATION



Lexmark™

Laser Printer MX912DXE

Printers and multi-functional printing units

According to ISO 14025

Table 3: At-wall power consumption during utilization

## Life Cycle Impact Assessment

The following provides an overview of the potential printer life cycle impacts with emissions classified and characterized to standard environmental impact metrics using the Recipe 2008 Hierarchist (H) midpoint characterization factors (v1.08).

Note that the mineral resource depletion results do not include any contributions from the paper life cycle as the AF&PA report does not allow for the conversion to ReCiPe 2008.

Ecotoxicity and human health are not included in this study, as per the PCR, due to their respective uncertainties.

LCIA results are relative expressions and do not predict impacts on category endpoints, the exceeding of thresholds, safety margins or risks.

	per 1000 pages including paper	per 1000 pages excluding paper	per printer lifetime including paper	per printer lifetime excluding paper
Global Warming Potential [kg CO <sub>2</sub> -Equiv.]	7.37E00	9.93E-01	2.02E04	2.73E03
Ozone Depletion Potential [kg CFC-11 eq]	2.43E-07	1.89E-09	6.69E-04	5.20E-06
Acidification Potential [kg SO <sub>2</sub> eq]	4.57E-02	3.49E-03	1.26E02	9.58E00
Eutrophication Potential [kg P eq]	1.60E-03	7.03E-06	4.40E00	1.93E-02
Fossil Fuel Depletion Potential [kg oil eq]	1.07E00	3.13E-01	2.93E03	8.59E02
Mineral Resource Depletion Potential [kg Fe eq]	2.70E-01	2.70E-01	7.43E02	7.43E02

Table 3: Summary of Life Cycle Impact Assessment Results

# ENVIRONMENTAL PRODUCT DECLARATION



Laser Printer MX912DXE  
Printers and multi-functional printing units

According to ISO 14025

## Interpretation of Results

### Dominance Analysis

Due to the 5 year lifetime and the number of pages printed per day as established by the Energy Star Typical Energy Consumption test procedure, the use phase heavily dominates the life cycle impacts. The below tables and charts display the results of the dominance analysis for each impact category addressed in Table 3.

#### Global Warming Potential

	per 1000 pages including paper	per 1000 pages excluding paper	per printer lifetime including paper	per printer lifetime excluding paper
Printer	3.94E-01	3.94E-01	1.08E03	1.08E03
Lexmark use phase	6.98E00	5.96E-01	1.92E04	1.64E03
E oL phase	2.96E-03	2.96E-03	8.13E00	8.13E00

Table 4: GWP dominance analysis [kg CO2 equiv]

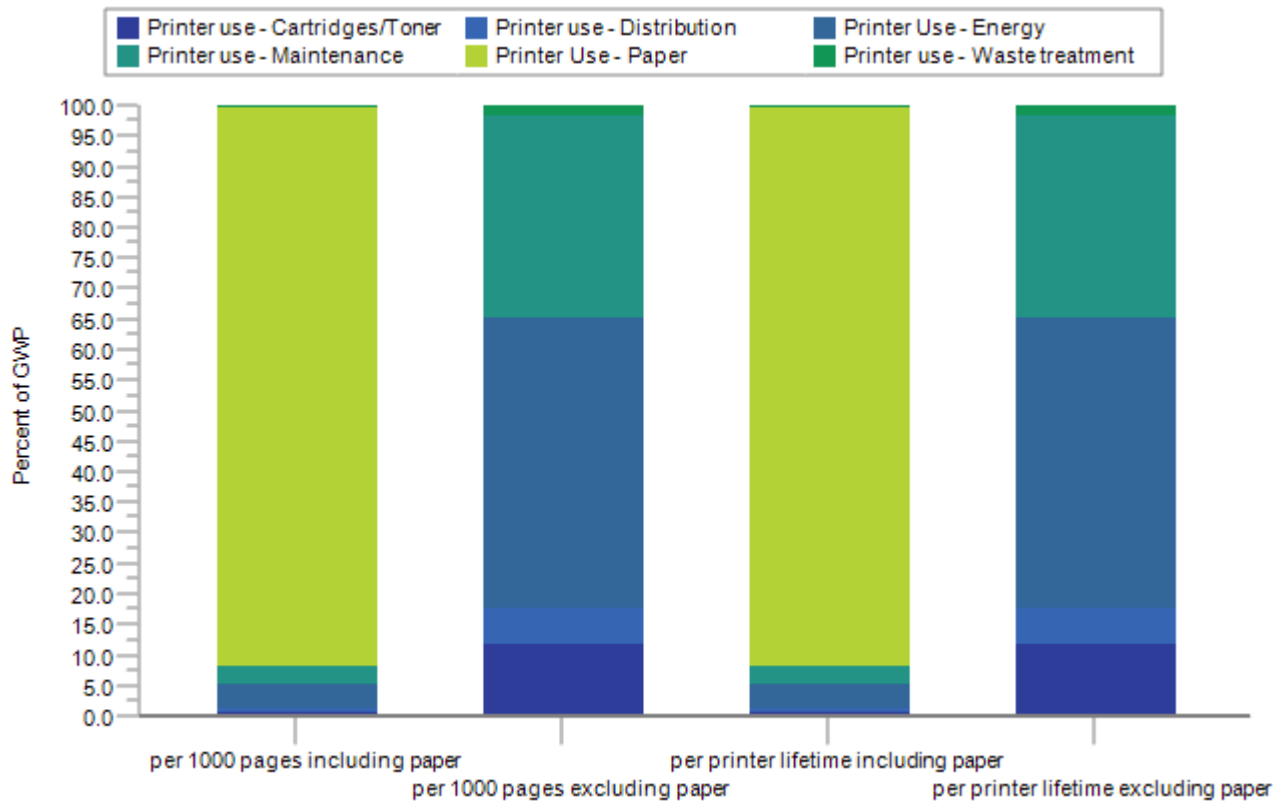


Figure 1: GWP dominance analysis of the use phase



# ENVIRONMENTAL PRODUCT DECLARATION



Laser Printer MX912DXE  
Printers and multi-functional printing units

According to ISO 14025

## Ozone Depletion Potential

	per 1000 pages including paper	per 1000 pages excluding paper	per printer lifetime including paper	per printer lifetime excluding paper
Printer	1.03E-09	1.03E-09	2.82E-06	2.82E-06
Lexmark use phase	2.42E-07	8.66E-10	6.66E-04	2.38E-06
E oL phase	2.79E-14	2.79E-14	7.67E-11	7.67E-11

Table 5: ODP dominance analysis [kg CFC-11 equiv]

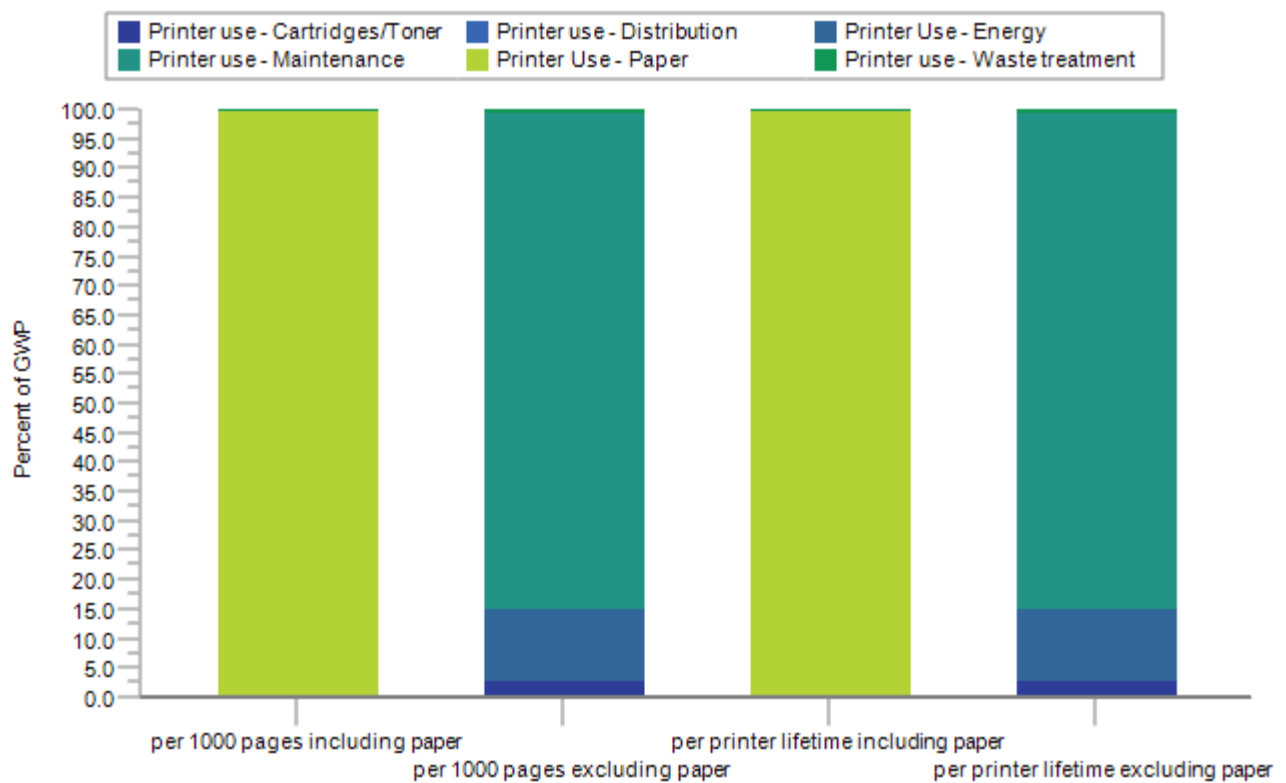


Figure 2: ODP dominance analysis of the use phase

# ENVIRONMENTAL PRODUCT DECLARATION



Laser Printer MX912DXE  
Printers and multi-functional printing units

According to ISO 14025

## Acidification Potential

	per 1000 pages including paper	per 1000 pages excluding paper	per printer lifetime including paper	per printer lifetime excluding paper
Printer	1.62E-03	1.62E-03	4.44E00	4.44E00
Lexmark use phase	4.41E-02	1.86E-03	1.21E02	5.10E00
E oL phase	1.18E-05	1.18E-05	3.25E-02	3.25E-02

Table 6: AP dominance analysis [kg SO<sub>2</sub> equiv]

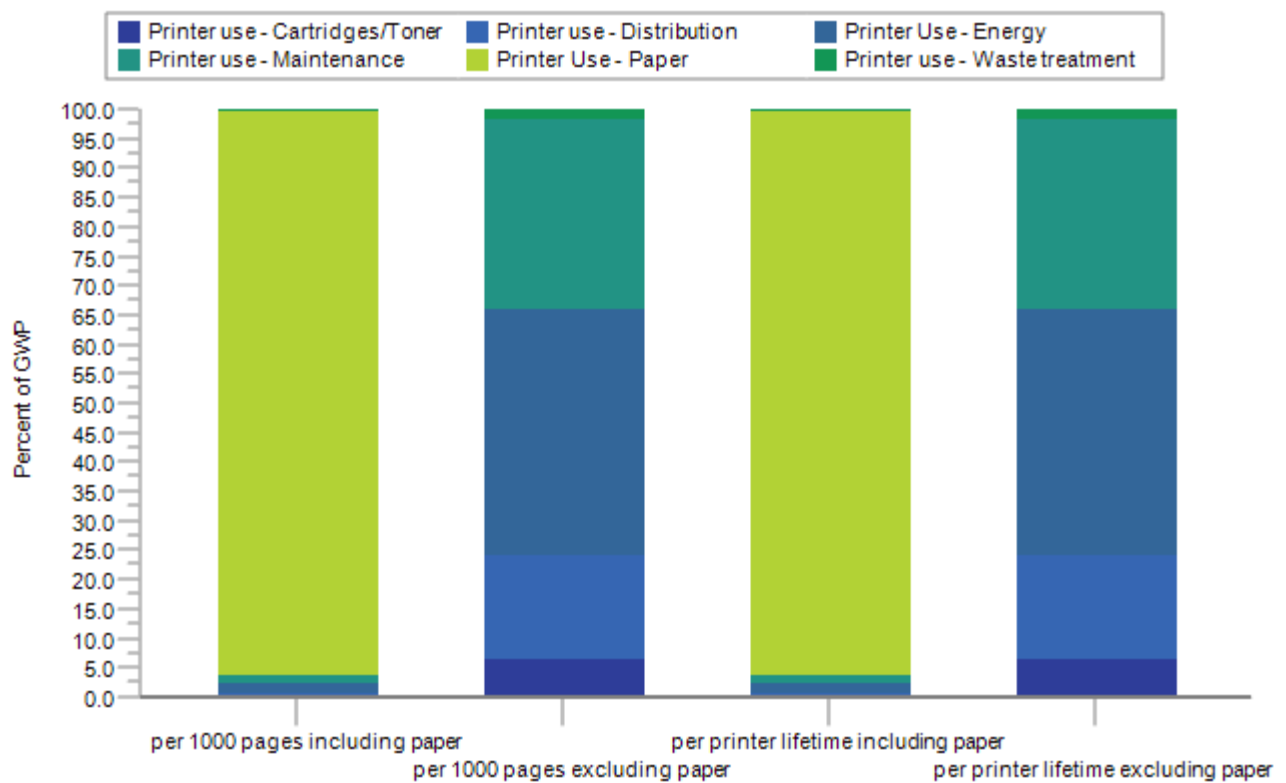


Figure 3: AP dominance analysis of the use phase

# ENVIRONMENTAL PRODUCT DECLARATION



Laser Printer MX912DXE  
Printers and multi-functional printing units

According to ISO 14025

## Eutrophication Potential

	per 1000 pages including paper	per 1000 pages excluding paper	per printer lifetime including paper	per printer lifetime excluding paper
Printer	3.52E-06	3.52E-06	9.68E-03	9.68E-03
Lexmark use phase	1.60E-03	3.49E-06	4.39E00	9.58E-03
E oL phase	1.93E-08	1.93E-08	5.29E-05	5.29E-05

Table 8: EP dominance analysis [kg P equiv]

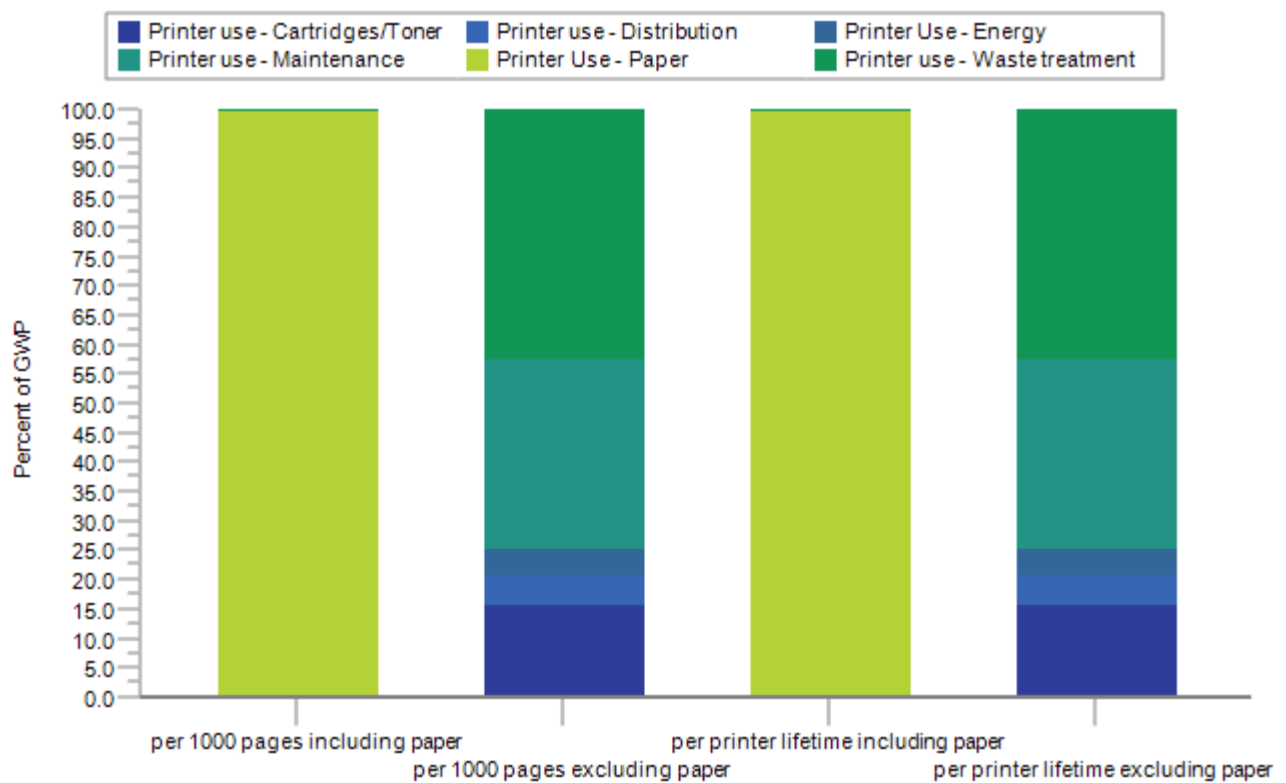


Figure 4: EP dominance analysis of the use phase

# ENVIRONMENTAL PRODUCT DECLARATION



Laser Printer MX912DXE  
Printers and multi-functional printing units

According to ISO 14025

## Fossil Fuel Depletion Potential

	per 1000 pages including paper	per 1000 pages excluding paper	per printer lifetime including paper	per printer lifetime excluding paper
Printer	1.19E-01	1.19E-01	3.27E02	3.27E02
Lexmark use phase	9.45E-01	1.93E-01	2.60E03	5.29E02
E oL phase	9.97E-04	9.97E-04	2.74E00	2.74E00

Table 9: FDP dominance analysis [kg oil equiv]

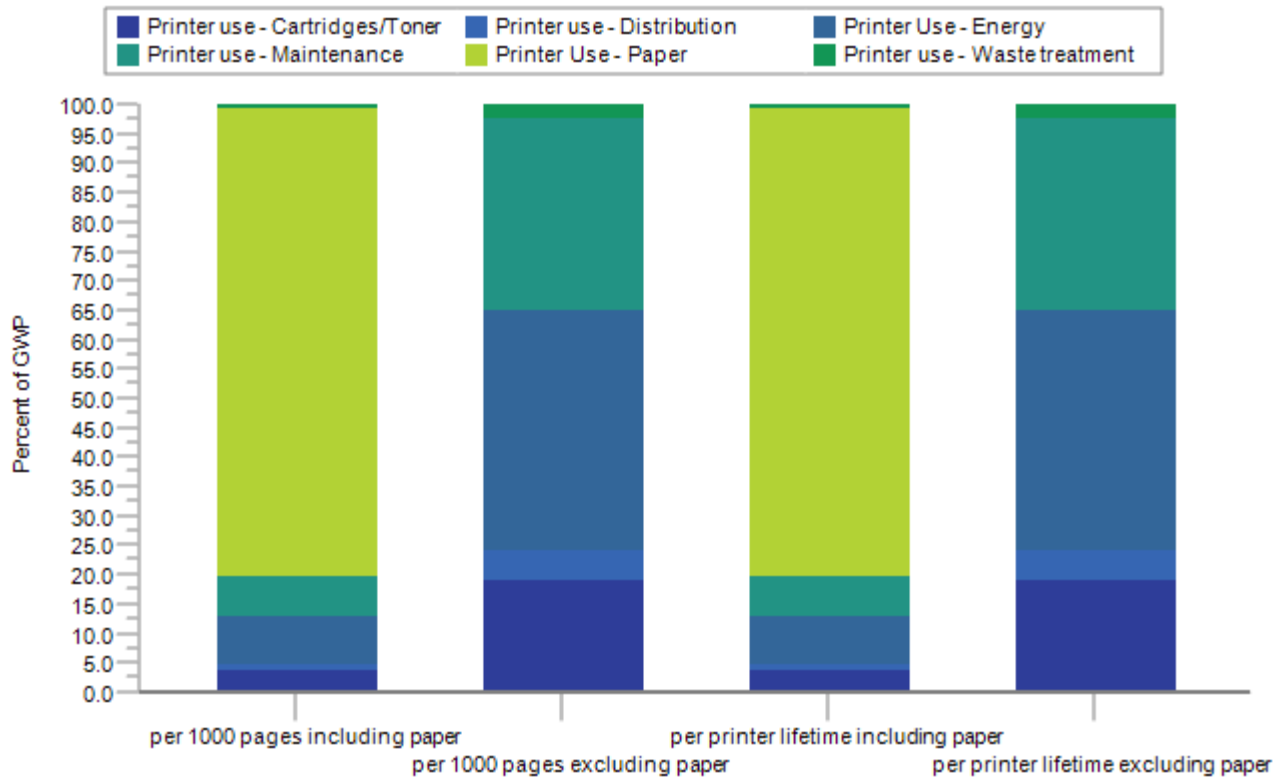


Figure 5: FDP dominance analysis of the use phase

# ENVIRONMENTAL PRODUCT DECLARATION



Laser Printer MX912DXE  
Printers and multi-functional printing units

According to ISO 14025

## Mineral Resource Depletion Potential

	per 1000 pages including paper	per 1000 pages excluding paper	per printer lifetime including paper	per printer lifetime excluding paper
Printer	2.38E-01	2.38E-01	6.55E02	6.55E02
Lexmark use phase	3.19E-02	3.19E-02	8.75E01	8.75E01
EoL phase	1.58E-05	1.58E-05	4.34E-02	4.34E-02

Table 10: MDP dominance analysis [kg Fe equiv]

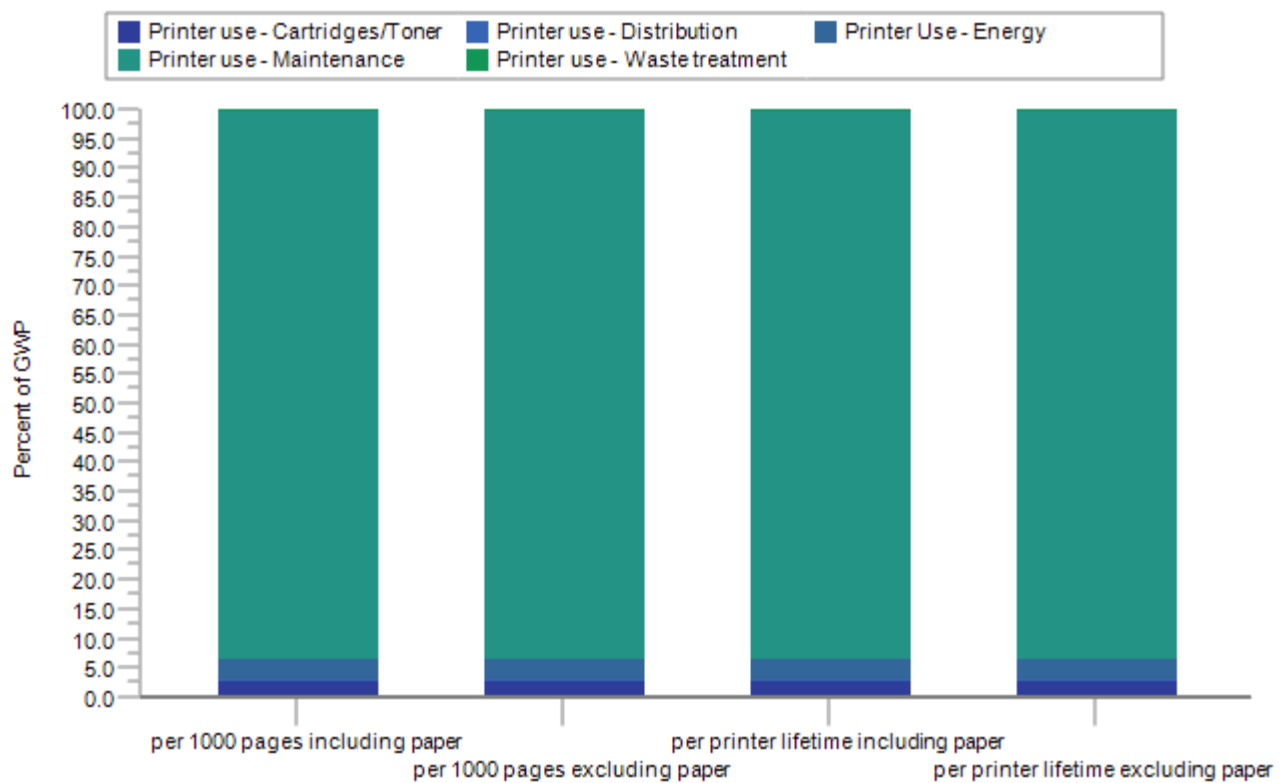


Figure 6: MDP dominance analysis of the use phase

# ENVIRONMENTAL PRODUCT DECLARATION



Laser Printer MX912DXE  
Printers and multi-functional printing units

According to ISO 14025

## Primary Energy Demand from Renewable and Non-renewable Resources

	per 1000 pages including paper	per 1000 pages excluding paper	per printer lifetime including paper	per printer lifetime excluding paper
Printer	5.75E00	5.75E00	1.58E04	1.58E04
Lexmark use phase	5.64E01	1.01E01	1.55E05	2.76E04
E oL phase	4.30E-02	4.30E-02	1.18E02	1.18E02

Table 11: PED dominance analysis [MJ]

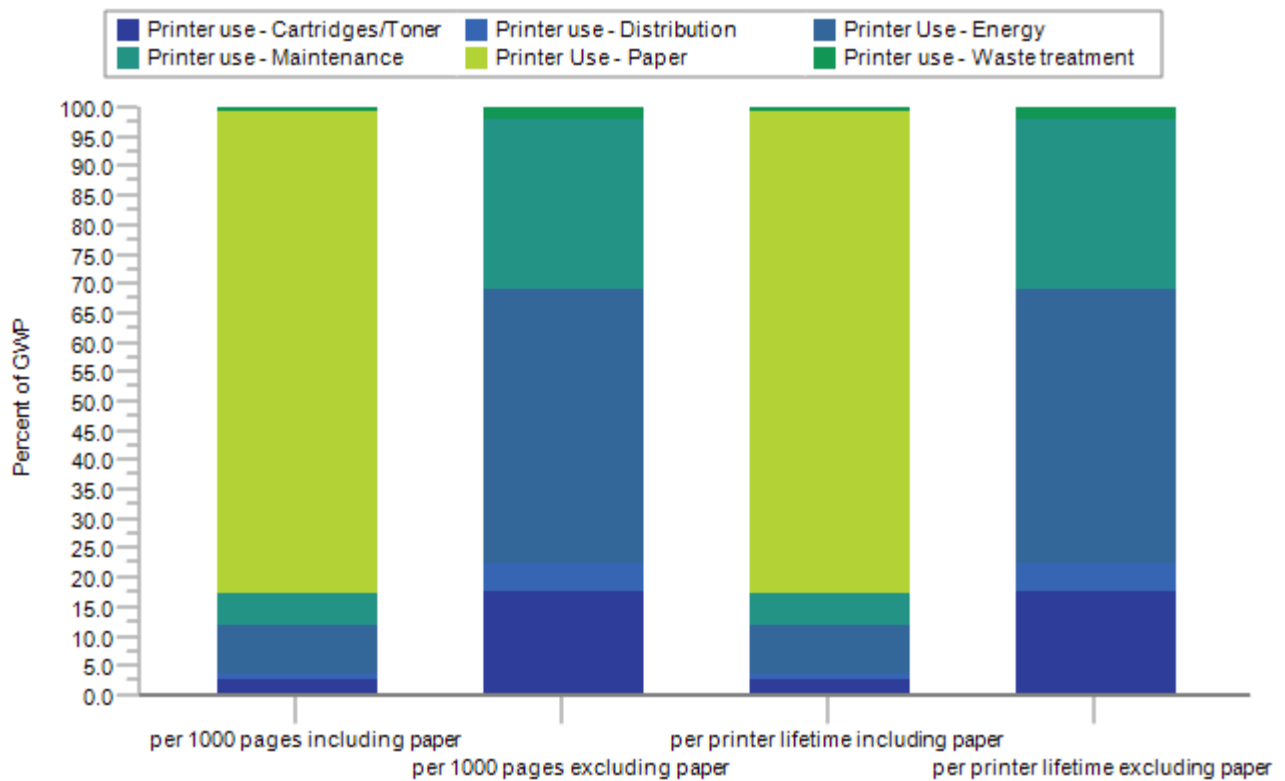


Figure 7: PED dominance analysis of the use phase

## ENVIRONMENTAL PRODUCT DECLARATION



Lexmark™

Laser Printer MX912DXE

Printers and multi-functional printing units

According to ISO 14025

---

### Assumptions and Estimations

---

Assumptions and estimations follow the governing PCR on printing equipment. Full details are documented in the EPD's background report, which was provided for verification purposes alongside the EPD. The LCA results represent the specific printer model as sold in the North American market.

In line with the PCR, the model assumes a printer lifetime of five (5) years. The printer is modeled to print an average of 2.11E003 pages per day based on a maximum print speed of 65 images per minute. The printer further possesses an automatic mechanic duplexing feature.

Power consumption figures are based on Energy Star testing of the printer using the average job load described above. Consumables consumption is based on the market-average yield across all available cartridge capacities. In addition, market-average use of remanufactured cartridges is taken into account, as applicable.

Printer and cartridge transportation distances to the end consumer are based on their points of origin and the population-weighted average distance to the 100 most populous cities in the continental US based on 2010 census data. The printer is shipped to the end consumer from the distribution center near Nashville, TN, and the cartridges are shipped from Ciudad Juarez, MX.

The LCI data for office paper is adopted from the uncoated, free sheet paper inventory developed by the American Forest & Paper Association (AF&PA). This paper dataset assumes that average office paper contains 4% recycled content. The mass of consumed paper is based on the US letter format and a surface weight of 75 g/m<sup>2</sup>. The AF&PA data includes paper production, transportation, and End-of-Life treatment (72% recycling, 23% landfill, 5% incineration).

The End-of-Life treatment for the printer is based on the assumption that 66.7 % of the printers are returned to Lexmark for recycling, while the remainder is disposed of through local waste streams, where the metal fractions are assumed to be recycled and the remainder landfilled. The EoL cartridges are assumed to go to remanufacturing, recycling, and landfill in equal shares.

In accordance with the cut-off methodology prescribed by the governing PCR, materials sent to End-of-Life recycling are considered to cross the system boundary without any further transformation. Only the impacts associated with waste transportation and disposal are included in the results.

### Description of Data and Period Under Consideration

---

All primary data is based on technical documentation and sales data accessed in 2016. All background data is taken from the GaBi 2016-6.115 Databases.

# ENVIRONMENTAL PRODUCT DECLARATION



Lexmark™

Laser Printer MX912DXE

Printers and multi-functional printing units

According to ISO 14025

---

## Data Quality

---

Manufacturing data of printers and consumables is based on a combination of Bills of Material and teardown analyses and is considered to be of overall high quality with low uncertainty. Distribution from printer manufacturing to the end consumer is representative of logistical data from Lexmark and best estimates of US average shipping distances, and is of moderate quality and high uncertainty.

Printer power consumption represents measured power consumed during printer operation in accordance with the use scenario outlined in the reference PCR and is of high quality and moderate uncertainty; actual print loads may differ. Toner cartridge use is based on expected yields based on the ISO test standards for cartridge use, and is of high quality and low uncertainty. Replacement rate for consumable parts is based on part design specifications, and is of high quality and moderate uncertainty.

The disposition of the printer and consumables at End-of-Life is based on best-available information by the respective experts at Lexmark. This data is of average quality and moderate uncertainty.

## Background Data

---

All background datasets relevant to production, power generation, transportation, and material disposal were taken from the GaBi 2016-6.115 Databases.

The data used for office paper is based on the data developed for the American Forest & Paper Association (AF&PA) and is representative for average North American office paper production in 2010.

The additional use of third-party background data from industry associations (e.g., worldsteel) is documented in the background report. They represent the latest LCI data as available in the GaBi 2016-6.115 Databases.

## Allocation and Methodological Principles

---

No significant allocations have been considered for the production of the printer. Allocation of production or use impacts across the various functions of a multi-function system is not included (i.e., allocation of production impacts to the provision of scanning services) and the impacts from all life cycle stages are considered within the system boundaries for the printing system.

Treatment of recycled or resold material is not considered in the body of the EPD, in accordance with the cut-off methodology required by the governing PCR.

A description of all of the methodological decisions made in modeling the life cycle impacts of office paper, including descriptions of the approach to modeling carbon sequestration and paper recycling, are described in the American Forestry & Paper Association's LCA report on printing and writing papers.



# ENVIRONMENTAL PRODUCT DECLARATION



Laser Printer MX912DXE  
Printers and multi-functional printing units

According to ISO 14025

## Additional Environmental Information

As required by the governing PCR, the assessment of human toxicity and ecotoxicity shall be included in this additional information section. The following metrics, which are based on the scenario 'per printer lifetime including paper' can help identify toxicity hot spots, but decision-making should also consider an exposure assessment.

	USEtox - Ecotoxicity [CTUe]	USEtox - Human toxicity (cancer) [CTUh]	USEtox - Human toxicity (non-cancer) [CTUh]
Printer use - Cartridges/Toner	2.51E 01	1.97E -07	2.11E -05
Printer use - Distribution	9.47E 00	2.45E -08	2.78E -06
Printer Use - Energy	1.73E 01	1.28E -07	1.08E -05
Printer use - Maintenance	1.13E 02	4.18E -07	4.89E -05
Printer Use - Paper	<b>1.56E 07</b>	8.69E -05	1.46E -01
Printer use - Waste treatment	4.51E 00	2.34E -08	2.35E -06



## References and Standards

---

- BSI (2011) PAS 2050: Specification for the assessment of the life cycle greenhouse gas emissions of goods and services. The British Standards Institution. London, \.
- EPA (2006) ENERGY STAR(R) Qualified Imaging Equipment Typical Electricity Consumption (TEC) Test Procedure. [https://www.energystar.gov/ia/products/fap/IE\\_TEC\\_Test\\_Procedure.pdf](https://www.energystar.gov/ia/products/fap/IE_TEC_Test_Procedure.pdf)
- ISO (1999) ISO/IEC 10561: Information technology -- Office equipment -- Printing devices -- Method for measuring throughput -- Class 1 and Class 2 printers. International Organization for Standardization. Geneva.
- ISO (2006a) ISO 14025: Environmental labels and declarations – Type III environmental declarations – Principles and procedures. International Organization for Standardization. Geneva.
- ISO (2006b) ISO 14040: Environmental management - Life cycle assessment – Principles and framework. International Organization for Standardization. Geneva.
- ISO (2006c) ISO 14044: Environmental management - Life cycle assessment – Requirements and guidelines. International Organization for Standardization. Geneva.
- ISO (2007) ISO 14065: Greenhouse gases - Requirements for greenhouse gas validation and verification bodies for use in accreditation or other forms of recognition. International Organization for Standardization. Geneva.
- NCASI (2010) Life Cycle Assessment of North American Printing and Writing Paper Products – Final Report. Prepared for the American Forest and Paper Association (AF&PA) and the Forest Products Association of Canada (FPAC) by the National Council for Air and Stream Improvement, Inc. Research Triangle Park, NC
- thinkstep (2013) GaBi 6 Product Sustainability Software. thinkstep AG, Leinfelden-Echterdingen. <http://www.gabi-software.com>
- ReCiPe (2008) *ReCiPe* methodology for Life Cycle Impact Assessment, version 1.08. Available at [www.lcia-recipe.net](http://www.lcia-recipe.net)
- ULE (2012) Product Category Rules for preparing an environmental product declaration (EPD) for printers and multi-function printing units (v1.0). UL Environment. Washington, DC.

## ENVIRONMENTAL PRODUCT DECLARATION



Laser Printer MX912DXE  
Printers and multi-functional printing units

According to ISO 14025

---

### Contact Information

---



Lexmark International, Inc.  
740 W. New Circle Road  
Lexington, KY 40550  
Tel: +1-859-232-2000

## ENVIRONMENTAL PRODUCT DECLARATION



Laser Printer MX912DXE  
Printers and multi-functional printing units

According to ISO 14025

---

LCA/EPD Verifier:

Thomas P. Gloria, Ph. D.  
Industrial Ecology Consultants  
35 Bracebridge Rd.  
Newton, MA 02459-1728  
direct: 617.553.4929  
email: [t.gloria@industrial-ecology.com](mailto:t.gloria@industrial-ecology.com)

Dr. Gloria is a certified Life Cycle Professional (LCACP) through the American Center for Life Cycle Assessment.